



How to set a stone in a 4-claw pendant

by Zoe Davidson
Jewellery

Cooksongold provides a wide range of ready-made settings, from silver ring settings and mounts to gold pendant settings. They come in various sizes and shapes so you can be sure to find the perfect setting to let your jewellery sparkle.

What you'll need:

Bench peg
999 081A



Stone / prong pusher and burnisher 999 AKS

5mm round peridot
cabochon stone
61PD RC50 or equivalent



9ct yellow
round double
gallery 4-claw
pendant setting
NB0 709



5mm stone setting burr 941 040

Flexshaft motor 999 3203

9ct yellow gold chain VBD 018H

Selection of needle files 999 3203

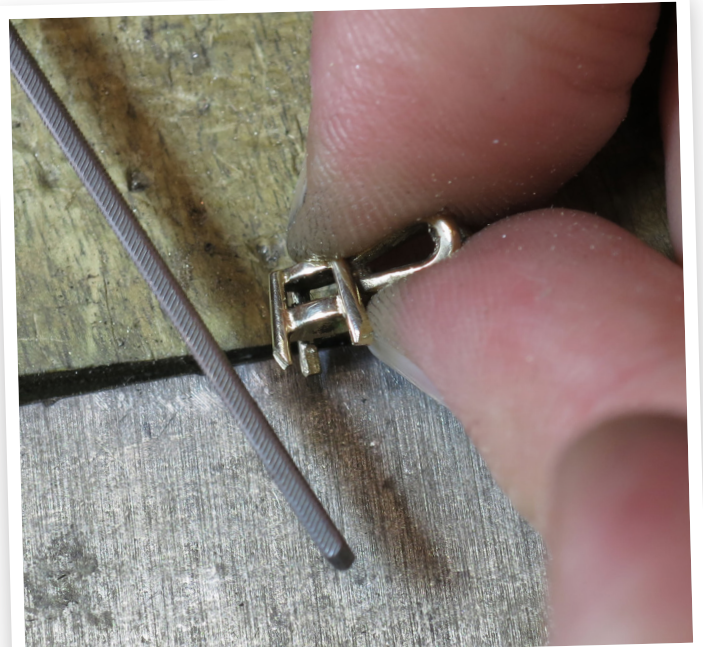
Polishing materials



Step 1

Thin the prongs

Hold pendant setting securely on peg. Re-establish seat in setting and file back inside of prongs by about 0.5-1mm using a stone setting burr. Thinning the prongs this way allows a firmer and easier set of the stone. Take care not to thin the metal too much. You can also adjust the height of the prongs at this stage.



Step 2

File the prongs

Using a flat needle file, file the top of the prongs to an angle of about 45 degrees.

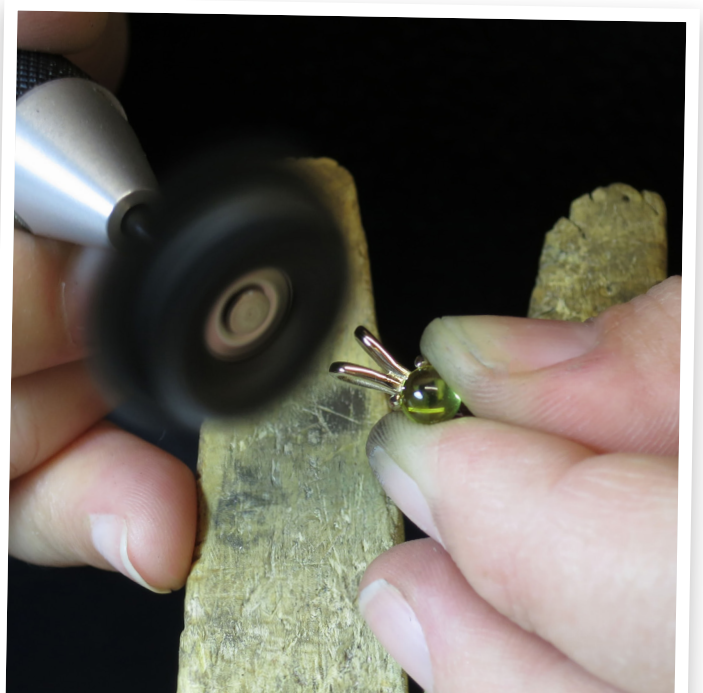
Polish the inside of the setting before inserting the stone.



Step 3

Set the stone

Insert the stone and push the tips of the prongs over the stone. A prong pusher is used for this setting, but any flat-ended pusher is also appropriate. Be careful not to slip the pusher out of position when setting. To ensure a firmer hold on the pendant, use a ring clamp. Do not deform the shape of the pendant.



Step 4

The finishing touch

Burnish the prongs so that their edges are flush with the stone. Give the ring a final polish.

Attach chain and your pendant is now complete!